

The CGC™ Intelligence Platform

The CGC™ (CemBR Global Compendium) is the most comprehensive cement related database and intelligence platform in the world



Country dashboard

A snapshot of the market with twelve cement related indicators. Downloadable in PDF.



Market and economic data

Macroeconomic and cement data in tabular and graphical form. Compare markets and download in Excel.



Manufacturing facilities data

Every cement manufacturing facility with detailed information and data. Interactive maps and tables.

The CGC™ is accessed via an annual subscription
Register now at cembrcg.com



CemBR Global Compendium (CGC™) is a trading name of Cement Business Advisory Ltd (CBA).

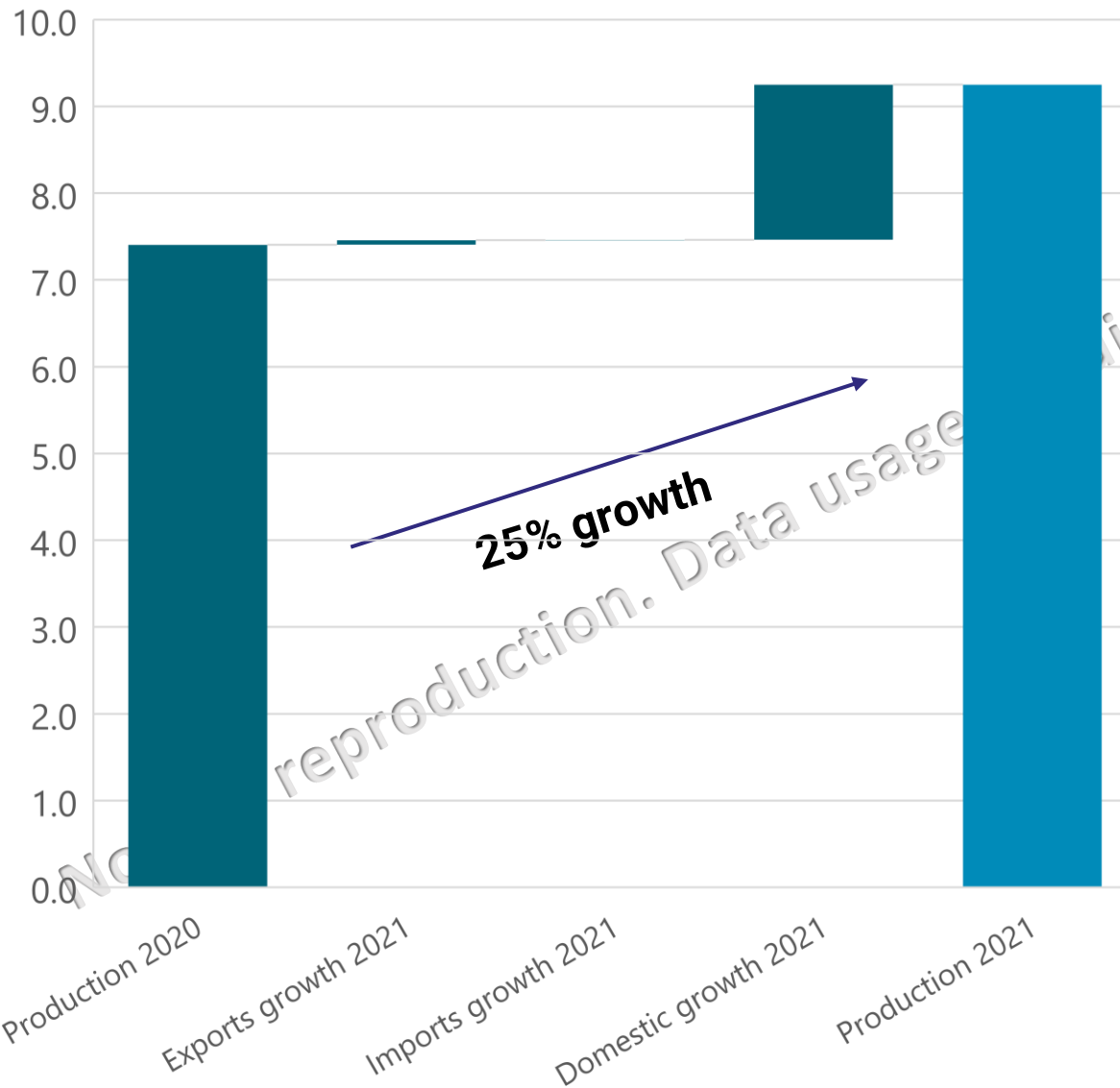
CemBR blogs

Single market profiles:

Kenya



KENYA – 2021 quick update and general profile



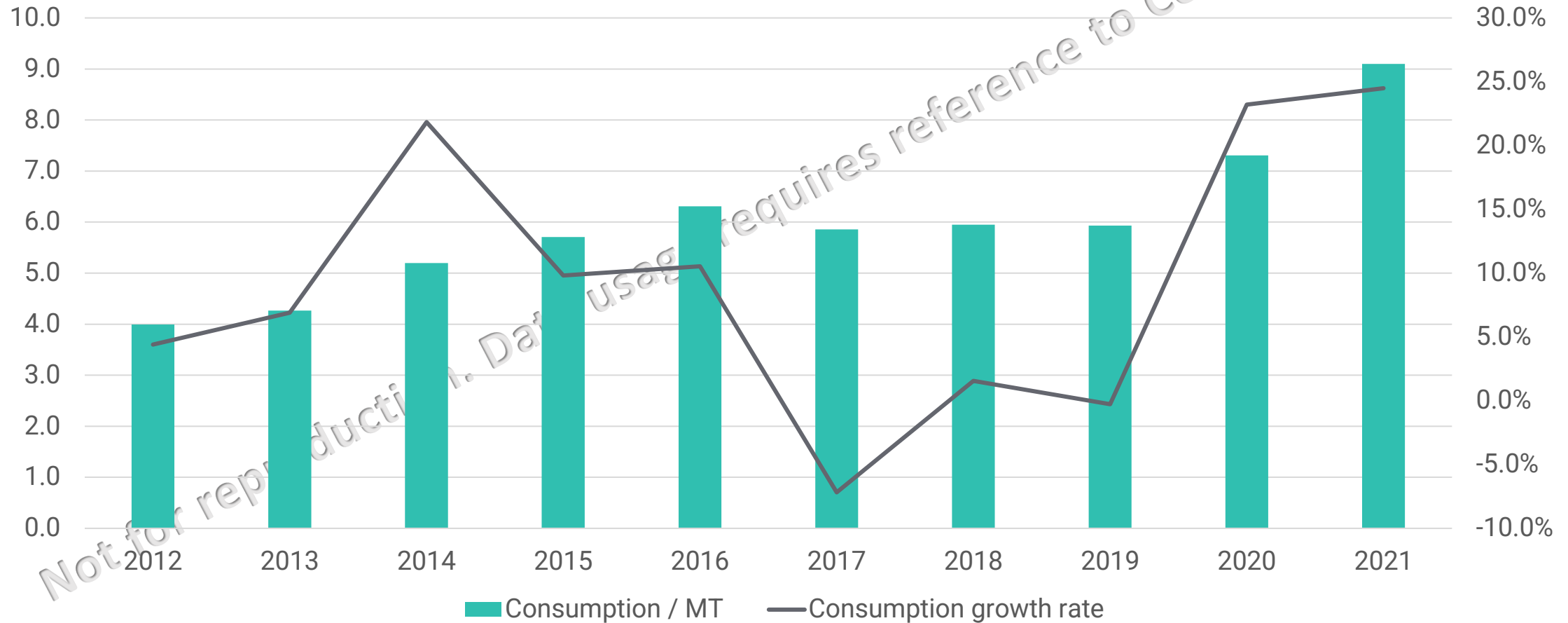
GENERAL DATA:	2021
CemBR REGION:	Sub Saharan Africa
AREA IN SQUARE KM:	580367
POPULATION:	54.986
URBANISATION RATE:	28%
CURRENCY:	KES
COMPARATIVE ECONOMY SIZE:	62/195
GDP PER CAPITA IN US\$:	2205
OFFICIAL LANGUAGE:	Swahili; English

2021 short update:

Kenya's cement consumption showed an unprecedented growth in 2020 and 2021. In 2020, the market grew by 23% whereas in 2021 it grew by almost 25%. At the same time, exports were at very low levels (around 200,000 tonnes in 2021), whereas imports were non-existent.

However, this significant demand growth was accompanied by additional cement and clinker capacity. Nevertheless, cement utilisation rates in 2021 reached almost 68%, a decade high for the industry.

KENYA – 10 Year cement consumption in million tonnes and annual growth rates



Source:

KENYA – Industry structure & dynamics

INDICATOR	INTEGRATED	GRINDING	WHITE
TOTAL PLANTS (NUMBER)	5	8	0
TOTAL CEMENT CAPACITY (MT)	2.9	10.9	0
TOTAL COMPANIES (NUMBER)	4	6	0
AVERAGE PLANT SIZE	0.6	1.4	N/A

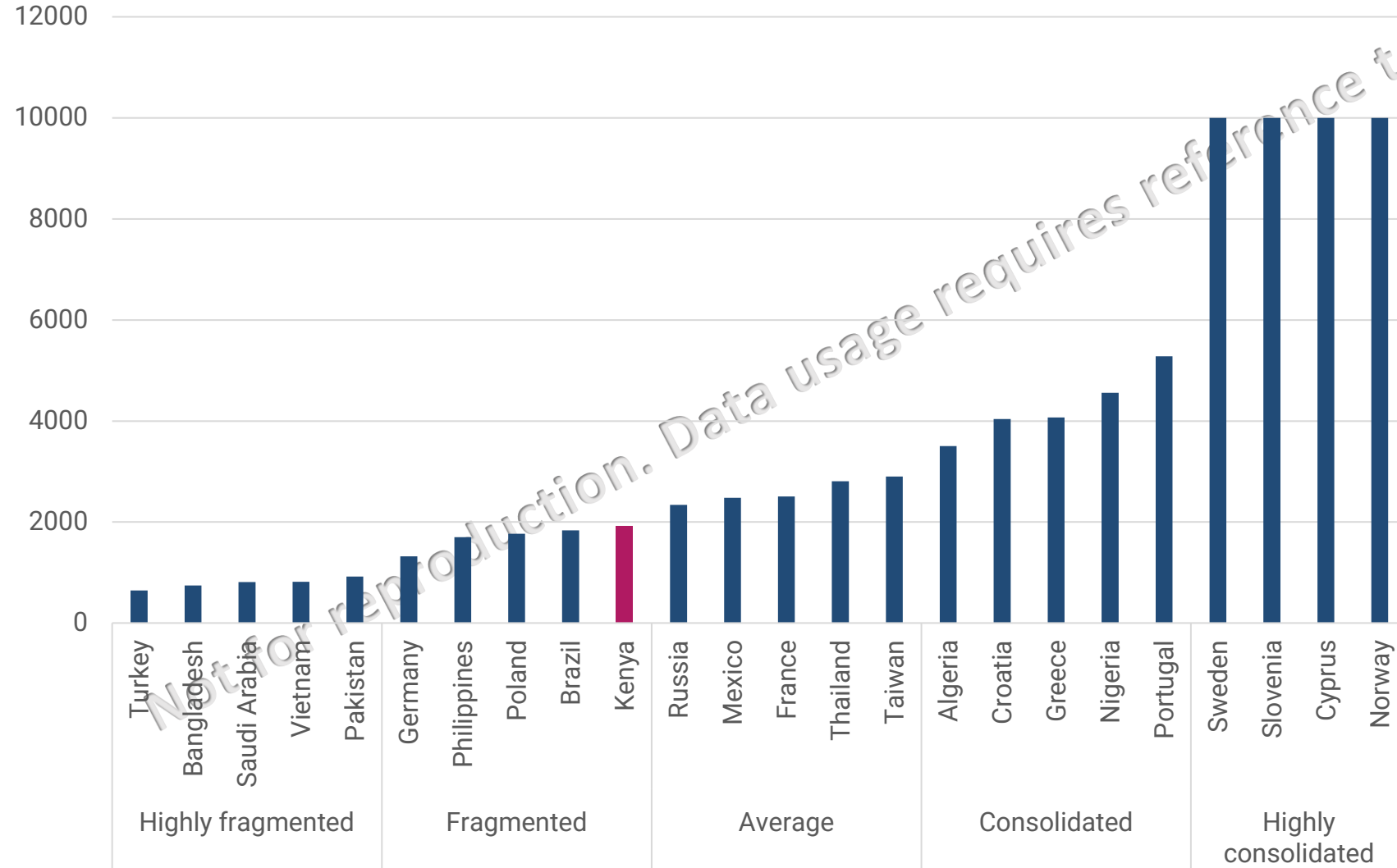
Source: CGC™

LOCAL COMPANY NAME	# PLANTS	INFLUENCED CAPACITY (MT)
National and ARM Cement	5	3.45 * There is a clinker only plant
Holcim / Bambouri Cement	2	3.30
Mombasa Cement	2	2.30
Others	4	4.65

NB: Grey cement only

Source:

KENYA: Industry Consolidation Index and global comparisons



METHODOLOGY:

CemBR uses a variant of the Herfindahl-Hirschman index (HHI). How is HHI calculated by CemBR: In theory, the HHI calculation is based on estimated market shares of all the participants in each market. This would also have to include importers of cement. However, CemBR has found that market share estimations are highly unreliable and often inaccurate, reflecting the views and opinions of the various corporates operating in a market. As a proxy of market concentration, CemBR is therefore using the indigenous capacity of the industry. This is a reasonable approach as, in the long term, market shares reflect capacity in each market. The range for HHI is between 0 (perfect competition) and 10,000 (monopoly). HHI is considered for each market and then compared to other markets in the report.

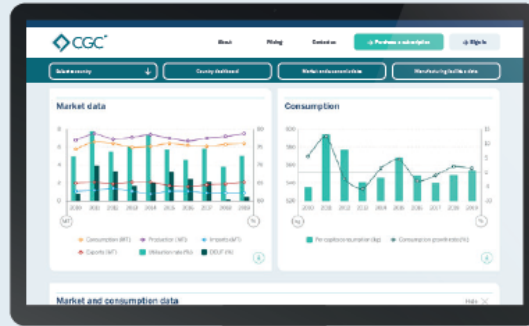
Source:





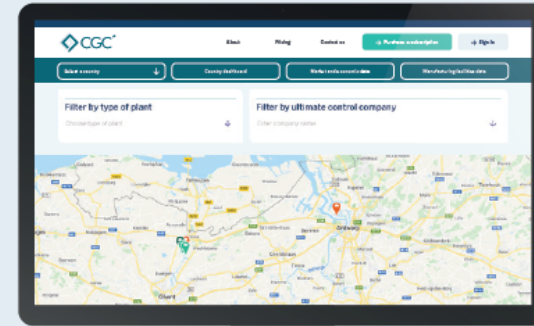
Country dashboard

A snapshot of the market with twelve cement related indicators. Downloadable in PDF.



Market and economic data

Macroeconomic and cement data in tabular and graphical form. Compare markets and download in Excel.



Manufacturing facilities data

Every cement manufacturing facility with detailed information and data. Interactive maps and tables.

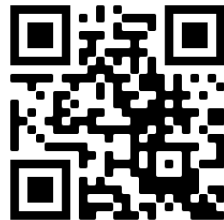
The CGC™ is accessed via an annual subscription
 Register now at cembrcg.com



The ultimate “intelligence” provider in the global cement sector

Our websites:

CemBR main website
cembrgroup.com



For the CGC:
cembrcgc.com



The CGC™ Intelligence Platform

The CGC™ (CemBR Global Compendium) is the most comprehensive cement related database and intelligence platform in the world



Country dashboard

A snapshot of the market with twelve cement related indicators. Downloadable in PDF.



Market and economic data

Macroeconomic and cement data in tabular and graphical form. Compare markets and download in Excel.



Manufacturing facilities data

Every cement manufacturing facility with detailed information and data. Interactive maps and tables.

The CGC™ is accessed via an annual subscription
Register now at cembrcgc.com

